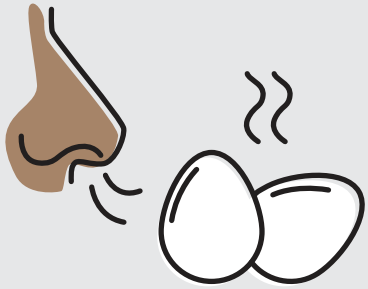


How can you detect a gas leak?



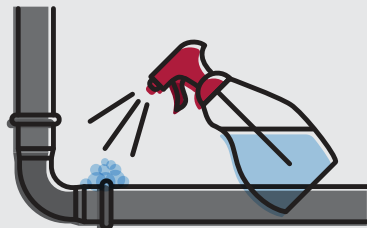
Smell of sulfur or rotten eggs.



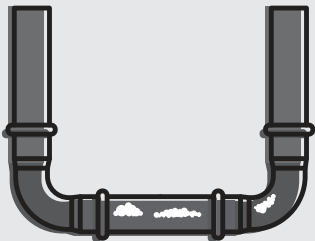
You will hear a hissing sound like "shhhh".



You will experience symptoms like headache, nausea, trouble breathing and/or eye irritation.



Check by doing the soap and water test. If you see bubbles forming there is a gas leak.



You will see a white residue on the gas pipes.

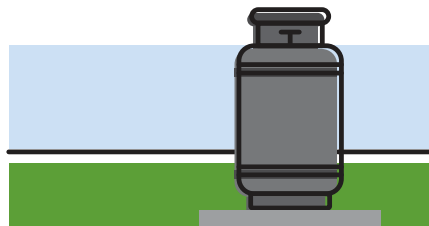


Check the color of the flames. It should be blue.

Security tips!

General

- Always place cylinders in an upright position.
- Always place cylinders outside, in a ventilated area.
- Always place cylinders on a concrete floor or blocks.
- Do not place cylinders near electric motors (minimum distance: 1.5 M).
- Keep the cylinders as far away as possible from your stove or oven (minimum distance: 3 M).
- Have your gas installation checked every 5 years by an authorized professional.

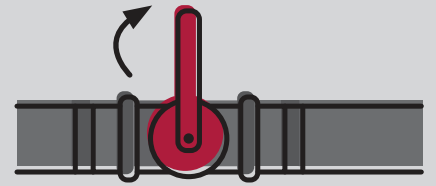


20 LBS gas cylinders

- Use a special gas connector to connect the hose from the exit of the cylinder to the stove.
- Always use regulators with a lock.
- Check the hose regularly (every month). Look for cracks or tears.
- Do not attempt to fix a broken hose, always buy a new one.

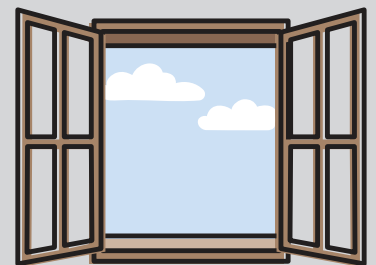
What should you do in case of a gas leak?

1



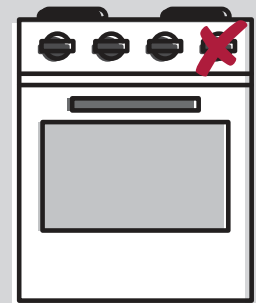
Close the gas tap and the valve of the cylinder.

2



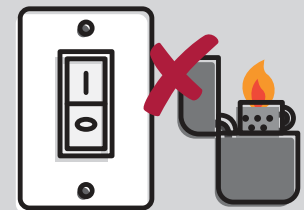
Open doors and windows to ventilate the area.

3



Do not turn on the stove.

4



Do not smoke, do not turn on light switches, and do not use electronic devices.

5



Go outside and call Curgas's emergency number

520-0427.